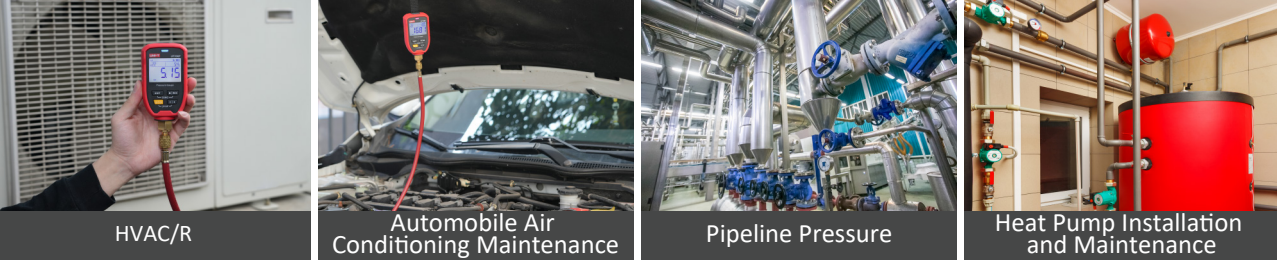


Technical Specifications

Specifications		
Range/Resolution	-1 to 60bar	0.01bar
	-1.01 to 61.18kg/cm²	0.01kg/cm²
	-75.0 to 4,500.3cmHg	0.1cmHg
	-14.5 to 870.2psi	0.1psi
	-29.52 to 1,771.8inHg	0.1in/Hg
	-100 to 6,000kPa	1kPa
	-0.100 to 6.000MPa	0.001MPa
Accuracy	±0.5%FS	
Units	Pressure: Bar; kg/cm²; cmHg; psi; inHg; kPa; MPa	
	Temperature: °C ; °F	
Refrigerant Types	10 types are preset (Set via APPs, total 94)	
Evaporating/Condensing Temperature	√	
High/Low Pressure Switch	√	
Data Record	8000	
Data Record Interval	1s~1h (APP setting)	
LED Indicators	Red (HP); Blue (LP)	
Pressure Zeroing	√	
Screen Backlight	√	
Bluetooth APP	√	
Auto Power Off	√	
Firmware Upgrade	√ (APP)	
Temperature Clamp Port	3.5mm port	
Battery Life	100h, (Alkaline battery; Backlight OFF; LED ON; 1-min record interval)	
IP Rating	IP54	
Pressure Connector	1/4" SAE Connector	
Over Range	OL(>65bar)	
Working Temperature & Humidity	-10~+50 °C ,< 90%RH	
Storage Temperature & Humidity	-20~+60 °C ,< 80%RH	
Characteristics		
Power Supply	3x Alkaline AA battery	
Product Size	145*68*39mm	
Product Net Weight	250g(Not battery included)	
Standrad Accessories	Wireless Pressure Gauge, Quick Start Guide, Safety Guide, Download Guide of Common Files, AA Battery*3, Hand Strap, Cloth Bag (Hard)	
Standard Quantity Per Carton	5pcs	

Applications



UNI-TREND
TECHNOLOGY

meters.uni-trend.com



UT336P
Wireless Pressure Gauge

UT336P Wireless Pressure Gauge measures the pressure of air-conditioner system, functions off-line data recording, monitors the long-time running of refrigeration and heat pump system, and equips a 3.5mm port for temperature clamp. With temperature clamp's use to view the high- and low-pressure temperature of refrigerant pipe and superheat/subcool from the phone APPs, suitable for the installation, debugging and maintenance of refrigeration and heat pump system.



High Accuracy



8000
Data Storage



Bluetooth
APP



LED Indication
for HP/LP



Waterproof
Dustproof



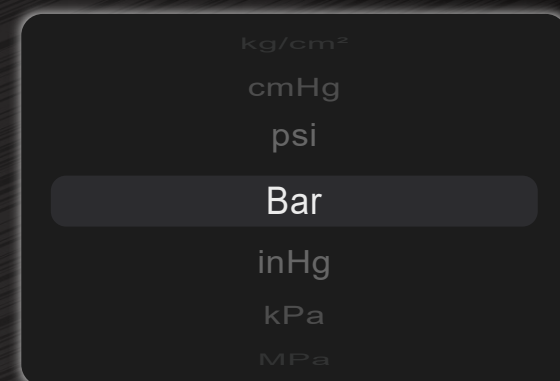
Support
Temperature Clamps

Supports Wired Temperature Clamp Connection

Measurement range: -50°~+150°



Multiple Pressure Units



High and Low Pressure Measurement, Supports HP/LP Switching

Capable of measuring and displaying real-time pressure and temperature values for both high and low pressure.



Supports Bluetooth APP Connection

Enables data recording and exporting, generate PDF reports and CSV files.



Hand Strap Design

Easy to place and measure.



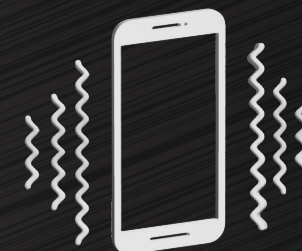
Supports 94 Refrigerant Types

Preloaded with 10 common refrigerants, easily modify via iENV



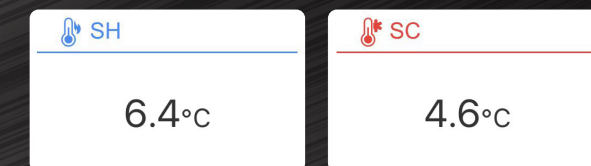
Alarm Mode

Settable high and low pressure thresholds, receive sound and vibration alarms on phone when thresholds are exceeded.



Automatically Calculates Superheat and Subcooling

It can be checked on the device or APP.



IP54 Protection Rating



Store Up to 8000 Sets of Offline Data

Record data offline without network, seamlessly transfer to mobile app via bluetooth for view and analysis.

